



**HEARTH PRODUCTS**

LENNOX HEARTH PRODUCTS  
KITS AND ACCESSORIES

750,199M  
REV. A 04/2006

**DECORATIVE ARCH SCREEN PANEL KIT**

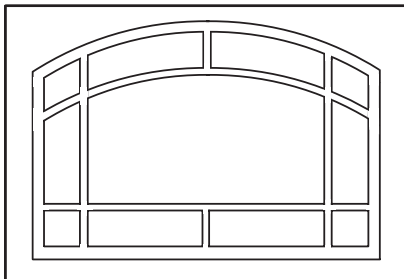
**INSTALLATION INSTRUCTIONS FOR DECORATIVE ARCH SCREEN PANEL KIT  
FOR USE WITH LMDV-33/35/40, MPD-33/35/40, MPB-35/40, SSDV-35/40, SSBV-35/40,  
MPD35ST, MPB35ST, EDV-4035, EDVST AND EBVST GAS FIREPLACES**

DECORATIVE ARCH SCREEN PANEL KIT		
CAT#	MODEL	DESCRIPTION
H3592	DASPK33TI	33" Decorative Arch Screen Panel
H3593	DASPK35TI	35" Decorative Arch Screen Panel
H3594	DASPK40TI	40" Decorative Arch Screen Panel

*Table 1*

KIT CONTENTS	
QUANTITY	DESCRIPTION
1 ea	Arched Doorframe Assembly
1 ea.	Instruction Sheet

*Table 2*



Arch Screen Panel

**TOOLS REQUIRED**

None

**GENERAL INFORMATION**

This one-piece decorative screen panel assembly fits on the face of the appliance over the glass doorframe. If you encounter any problems, need clarification of these instructions or are not qualified to properly install this kit, contact your local distributor or dealer.

**Read and understand all instructions and warnings in this document before beginning the installation.**

**⚠ CAUTION**

**INSTALL ONLY WHEN THE FIREPLACE IS OFF AND COLD!**

**⚠ WARNINGS**

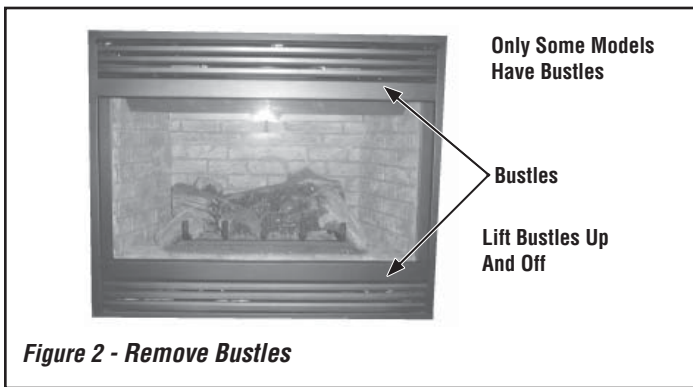
**Hot! Do not touch! These decorative screen doors are NOT heat guards. The tempered glass behind the screens will be hot during operation and will retain heat for a while after shutting off the appliance. Severe burns may result. Carefully supervise children in the same room as appliance.**

- As with any similar heating appliance, surfaces of the frame, the door and appliance can become very hot.

**INSTALLATION INSTRUCTIONS:**

- Remove Top Panel** - Remove the top louvered or radiant panel/hood assembly by pulling the assembly up and out (see *Figure 1*). In instances where the radiant panel is used and it is framed in with tile or other approved material, the hood must still be removed by firmly pulling it forward until it releases from the receiving brackets. Some models have bustles (as shown in *Figure 2*) which must be removed. If applicable, remove the top and bottom bustle by lifting them up and out.

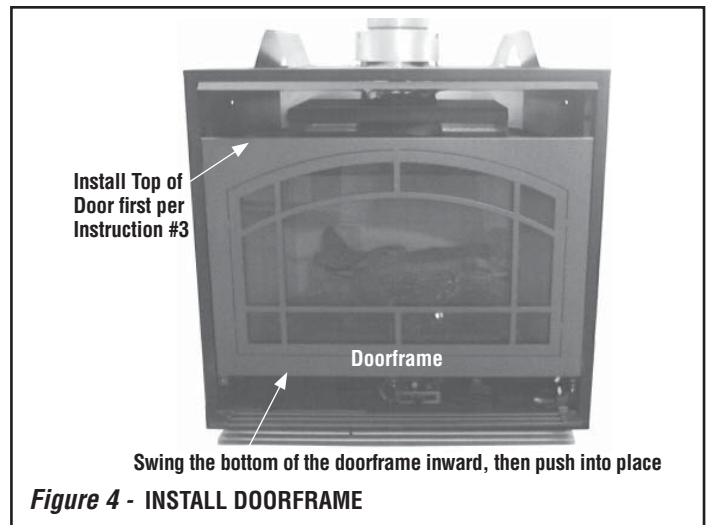
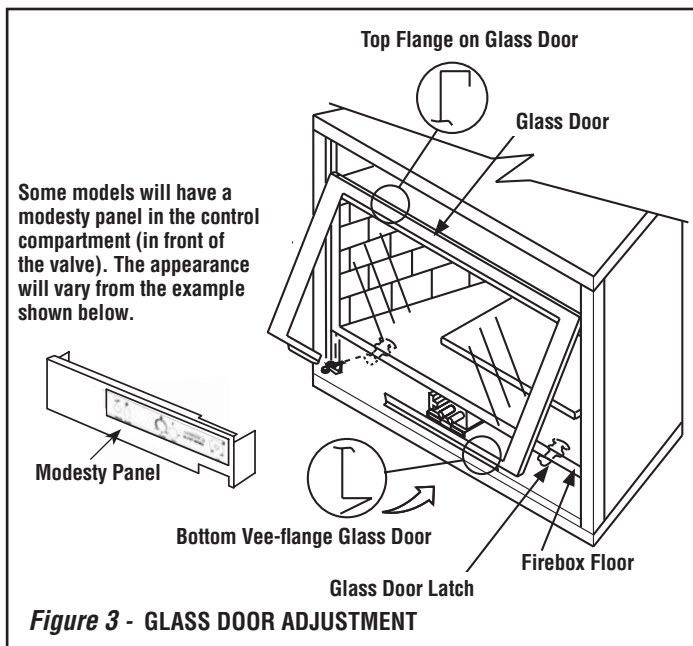
**Figure 1 - Remove Top Panel**



2. Ensure the glass door assembly on the fireplace is properly aligned as follows:
  - a. Open or remove lower compartment door (refer to Homeowner's Manual provided with appliance).

**Note: Units with Modesty Panels** - Remove the modesty panel as follows: Lift the modesty panel by the tab on the panel's right end, pull the right end of the panel away from cabinet and then pull the panel diagonally out of the corner post slots on the left side of the unit. Remove the modesty panel carefully, so that none of the wires become loose or disconnected.

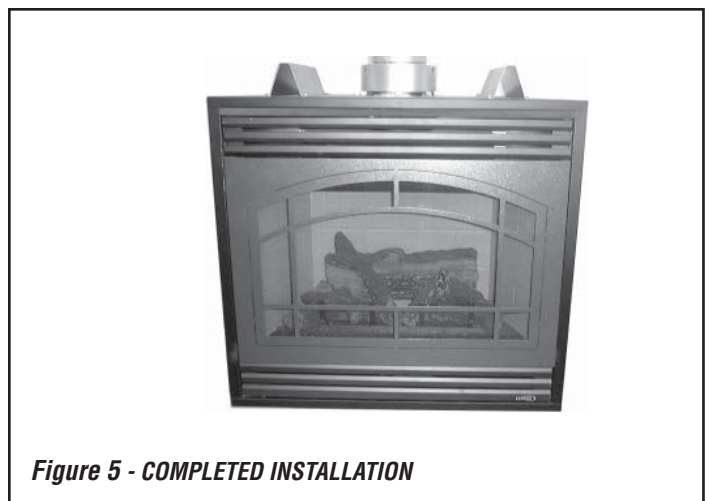
- b. Open the latch(es) at the bottom of the glass door assembly as shown in **Figure 3** (refer to Homeowners Manual).
- c. Adjust glass door so that it is evenly spaced and aligned to the fireplace chassis on both sides. See **Figure 3**.
- d. Fasten the latch(es). Ensure that the latch(es) are engaged with the door's vee-flange and fully closed. See **Figure 3**.



3. Remove the arched screen doorframe from packaging, then install it as follows:
  - a. Locate slots on each side of fireplace.
  - b. Position the top of the doorframe above the top of the glass door assembly (centered and approximately 1" above glass door assembly). See **Figure 4**.

**Note:** The bottom of the doorframe should be held slightly away as shown in **Figure 4**. Swing the bottom of the doorframe inward aligning the sides of the doorframe between the glass door and fireplace chassis and tabs on doorframe aligning into slots on fireplace. Swing the bottom of the doorframe in, then push down to ensure engagement.

4. Ensure that the latch(es) below the door are engaged with the door's vee-flange and fully closed before operating the fireplace (see **Figure 3**).
5. (Units with Modesty Panels) Reinstall modesty panel, ensuring all wires are securely connected.
6. If applicable, reinstall the top louver assembly, radiant panels or hood.
7. Reinstall or close the bottom louver or radiant panel.



NOTE: DIAGRAMS & ILLUSTRATIONS ARE NOT TO SCALE.

Lennox Hearth Products reserves the right to make changes at any time, without notice, in design, materials, specifications, prices and the discontinuance of colors, styles and products. Consult your local distributor for fireplace code information.

**LENNOX**<sup>TM</sup>

**HEARTH PRODUCTS**

1110 West Taft Avenue • Orange, CA 92865